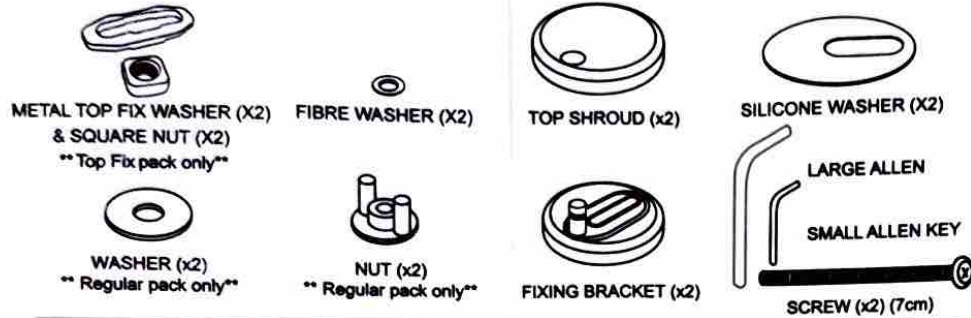


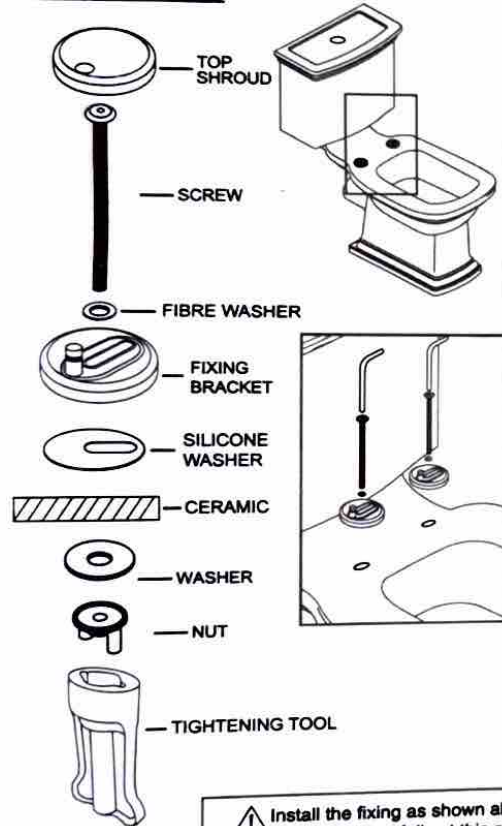
ASSEMBLY INSTRUCTIONS

SOFT CLOSE SEAT INSTALLATION

Fixings included:

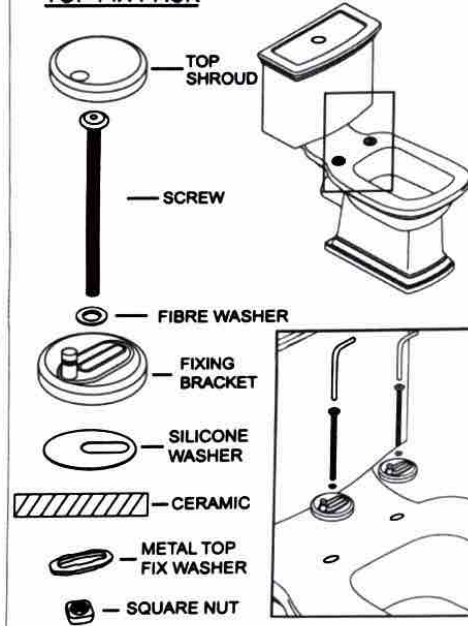


REGULAR PACK

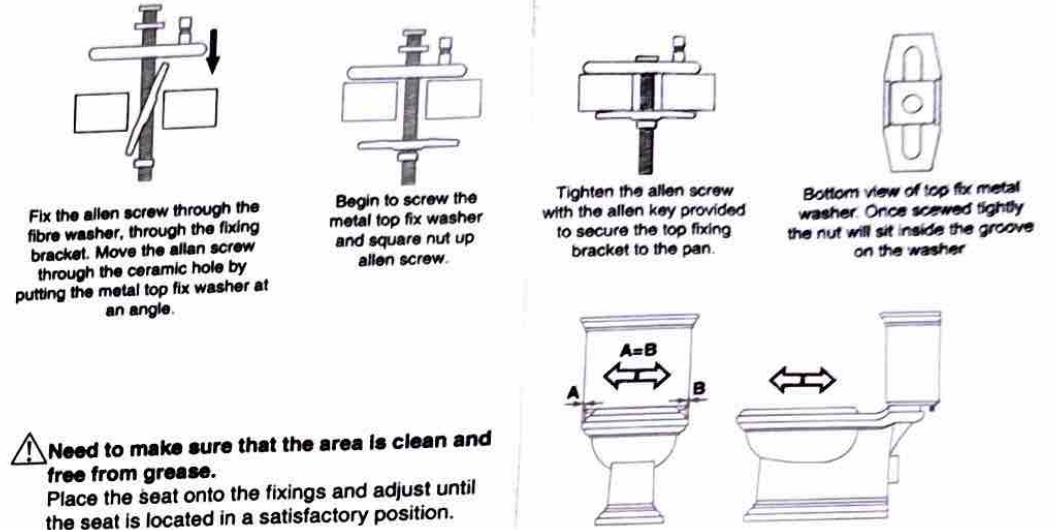


⚠ Install the fixing as shown above. Do not tighten fully at this point. Adjustability is required at this stage in order to position the seat in the following steps

TOP FIX PACK

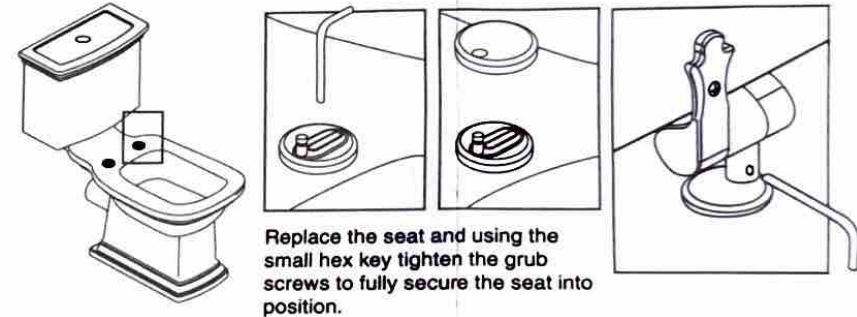


How to install the seat using the metal top fix washer



⚠ Need to make sure that the area is clean and free from grease. Place the seat onto the fixings and adjust until the seat is located in a satisfactory position.

Carefully remove the seat, tighten the allen screw fixings & replace the cap cover.
NOTE: It is important to tighten the fixings fully. When installing turn the hex key until it is not possible to tighten any further. Failure to tighten fully may result in hinge movement and eventual hinge failure over a period of prolonged usage.



✓ This completes your assembly of the soft-close hinge.

⚠ Do not use any neat chemicals and under no circumstances use any form of acid or alkaline cleaners (such as lime-scale removers), as these will damage the plating on the metal work. Abrasive creams and powders are definitely unsuitable and should be avoided, as should scourers. Fittings (often chrome finish) should be regularly cleaned with a damp cloth. Avoid using any abrasive metal, polishes or chemical cleaners as these may badly damage the finish.